

# ACCESS



## By JR train

Hakata→Beppu ..... 1hr51min  
[Nippo Main Line]

Kokura→Beppu ..... 1hr8min  
[Nippo Main Line]

Kurume→Beppu ..... 2hr32min  
[Kyūdai Main Line]

Kumamoto→Beppu ..... 3hr1min  
[Hōhi Main Line (Trans-Kyushu Express)]

Miyazaki→Beppu ..... 3hr10min  
[Nippo Main Line]



## By highway bus

Fukuoka→Beppu .... approx.2hr20min

Nagasaki→Beppu ... approx.3hr30min

Kumamoto→Beppu ... approx.4hr40min  
(To Oita, approx.4hrs)



## By ship

Osaka→Beppu ..... 11hr50min  
[Ferry Sunflower]

Yawatahama→Beppu ... 2hr50min  
[Uwajima Unyu Ferries]



## By plane

Seoul→Oita Airport ... 1hr30min  
[Korean Air]

Tokyo→Oita Airport ... 1hr40min  
[ANA/JAL/SNA]

Nagoya→Oita Airport ... 1hr20min  
[ANA/IBEX]

Osaka→Oita Airport ..... 1hr  
[ANA/JAL/IBEX]



## By car

Oita Airport→Beppu .... approx.40min (40km)  
[Airport shuttle bus]

Kokura→Beppu ..... approx.2hr (90km)  
[Route 10/Usa-Beppu Road]

Fukuoka→Beppu ... approx.1hr50min (143km)  
[Oita Expressway]

Kumamoto→Beppu ..... approx.3hr (194km)  
[Oita Expressway]

Oita→Beppu ..... approx.20min (12km)  
[Route 10]



# BEPPU

## THE BEPPU SIGHTSEEING BROCHURE

### Contact Information

#### Inquiries about Sightseeing

Tourism and Community Development Div. Onsen Tourism Dept. Beppu City Hall. Phone : 0977-21-1111  
1-15 Kaminoguchi-cho, Beppu-shi, 874-8511 <http://www.city.beppu.oita.jp/>

Beppu Tourism Association Co., Ltd. Phone : 0977-24-2828  
1st 1-15 Kaminoguchi-cho, Beppu-shi, 874-8511 <http://www.beppu-navi.jp/>

Beppu Foreign Tourist Information Office (FTIO) Phone : 0977-21-6220  
12-13 Ekimae-cho, Beppu-shi, 874-0935 (in Beppu Station) <http://www17.ocn.ne.jp/~ftio/>

#### Hotel and lodging information

Beppu Ryokan Hotel Association Phone : 0977-22-0401  
Grand Mere Building, 4th fl, 2-10-19 Kitahama, Beppu-shi, 874-0920 <http://www.beppu-navi.jp/ryokan>





# 春

Spring

Spring in Beppu is a magical and beautiful time of year.

Sakura blossoms bloom and fall through the misty steam rising from the ground. And the breath of Mother Nature pours from the earth, ushering in a new season.

- Beppu Hatto Onsen Festival
- Lake Shidaka Sakura Festival
- Beppu Mt. Tsurumi Climbing Rally

## ◎Lake Shidaka MAP A-1

Surrounded by Mt. Tsurumi and Mt. Yufu, this mountain lake sits 600 meters above sea level. It is a very popular hanami spot when the azalea and sakura are full bloom, and there is a campground as well. Visitors can enjoy its beautiful landscape year-round—from the autumn leaves in the fall, to the snow covered caps in the winter.

# 夏

Summer

## ◎Lake Kagurame MAP A-2

Situated south of Lake Shidaka, this lake is said to have been the home of the legendary Kabujo (singing and dancing woman) of Tsumidake Shrine. There are 300,000 irises of 80 different varieties around the river, which come to bloom in mid-June to the beginning of July. It is also a well-known spot to see irises.

In the summer, the azalea on Mt. Tsurumi and Mt. Yufu come to full bloom, and new leaves begin to peak out. Visiting at this time of year lets you fully experience the abundant natural beauty Beppu has to offer—from the sea and mountains, to its plateaus to ravines.

- Lake Kagurame Iris Watching
- Beppu Summer Night Festival

# 秋

Autumn

## ◎ Beppu Ropeway MAP A-1

Take a stroll through the air on a ropeway to the top of the 1300 meter-high Mt. Tsurumi for a great view of the city and Beppu Bay. The view of Mt. Tsurumi covered in red autumn leaves is especially breathtaking.

- Beppu Yukemuri Health Marathon Walk
- Oita Pref. Agricultural, Forestry and Fisheries Festival

# 冬

Winter

## ◎Rime on Mt. Tsurumi MAP B-1

Experience the silvery world of rime covering Mt. Tsurumi—a rare phenomenon in Kyushu. Icy "flowers" form on azalea trees creating a magical landscape across the mountains.

- Beppu Christmas Hanabi Fantasia

Onsen Heaven.

A city rich in nature and culture,  
Overflowing with the energy of the Earth.

Recommended tourist routes.

Select a course that suits your mood and traveling style.

Relax and refresh your mind and body.

Relax and Unwind Course

Stroll through the Beppu's old-style charm and atmosphere.

Old Town Course

Have fun at Beppu's many recreational facilities.

Recreation Course

Experience the mysteries of the earth.

Jigoku Meguri Tour

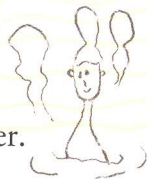
Beppu boasts the highest output of hot spring water in Japan and few places on earth can match its sheer variety of onsens. Our city is blessed with breathtaking landscapes in all four seasons and possesses a unique culture and atmosphere. Just like the hospitable waters of our abundant hot springs, Beppu warmly welcomes people from all over the globe.



# Relax and refresh your mind and body.

## Relax and Unwind Tour

Relax and let yourself be healed  
by the power of natural hot spring water.



Beppu Hatto refers to the top eight hot springs in Beppu. Experience a variety of distinctive hot springs each with their own unique water qualities and atmosphere. Have a high-quality soak in Japan's top hot springs, to relax and unwind your body in mind.

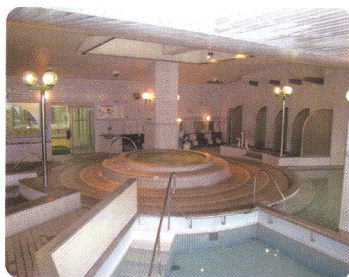
### 1 Beppu Onsen

Located in the center of town, Beppu Onsen has become the symbol of Beppu hot springs. Although lively and bustling, the narrow streets around the onsen retain much of the old-style charm.



### 2 Hamawaki Onsen

Also known as the "birthplace of Beppu hot springs", Hamawaki Onsen overlooks the ocean and contains small public baths. The old style atmosphere of the Meiji and Taisho periods still remain.



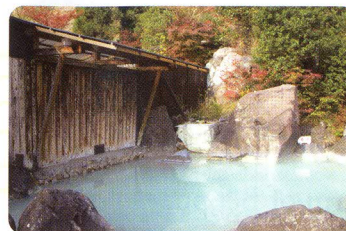
### 3 Kankaiji Onsen

A thriving hot spring resort since the Kamakura Era, Kankaiji Onsen is located on the slope of a hill. Today the area is known as a luxury resort spot featuring several fashionable hotels.



### 4 Myoban Onsen

The highest hot spring resort in Beppu, it contains a wide variety of springs and baths - most of which contain sulfur. The area also contains the famous Yunohana Goya where yunohana crystals are grown from hot spring minerals. Yunohana has been made here continuously since the Edo Era.



### 5 Kannawa Onsen

Numerous ryokan and mixed bathing baths are located here, and steam from the hot spring vents can be seen rising throughout the area. Kannawa Onsen is also the main hot spring in the Jigoku Meguri tour route, and the home of Jigoku Mushi (literally "hell-steaming") - a cooking method unique to Beppu.



### 6 Shibaseki Onsen

At this quiet and historical hot spring located in the mountains, you'll feel like you have the onsen all to yourself. It is said that in Emperor Daigo and Emperor Go-Reizei bathed here in 895 and 1044, respectively.



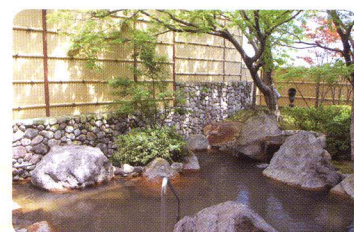
### 7 Kamegawa Onsen

Located on the coast near JR Kamegawa Station, this charming little hot spring is known for its friendly staff. Its Beppu Beach Sand Bath where you can relax in the hot sand while listening the soothing sounds of the ocean is very popular.

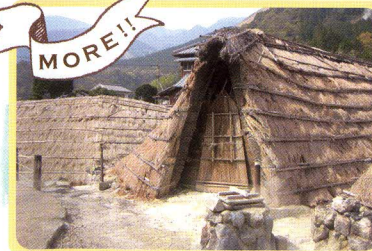


### 8 Horita Onsen

Known for its abundant natural scenery, this hot spring dates back to the Edo Era. Located near Beppu Interchange, it has been known as the gateway to the west from Yufuin, Hita, and Dazaifu since days of old.



MORE!!



### Traditional Craft Since the Edo Era Yunohana Goya

MAP D-1

In Myoban you will find several straw-hatched huts where yunohana is produced using the mineral rich steam rising from the hot spring vents. In fact, Myoban is another word yunohana. It is made using the same traditional methods since the Edo Era and the method has been designated as an Important Intangible Cultural Property by the government. There is also hut set up especially for visitors where you can see the yunohana-making process free of charge.

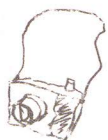


Stroll through the Beppu's  
old-style charm and atmosphere.

## Old Town Course

Forget your busy life and  
get lost in the slow paced charm of Beppu.

The city of Beppu is overflowing with traditional, old-style atmosphere. Take a walk through the back streets and you'll encounter many treasures. If you are exhausted, you can stop at one of the many hot springs to rest your tired legs, so don't forget your towel.



*Recommended!!*

### Beppu Hatto Walk

Beppu Hatto Walk is a walking tour where a local volunteer guide takes you around town. Unlike a tour with a professional guide, you'll see the spots that the locals like to go. Strolling through the onsen town which retains much of its old-style charm or visiting one of Western-style buildings in the Yamanote district are just some examples of the routes your guide might take you one.



Possible routes

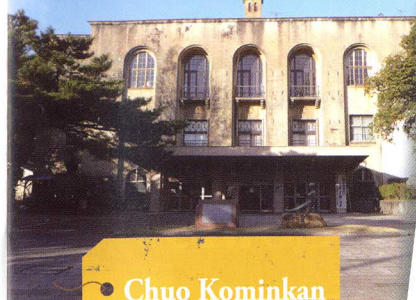
- Back streets of Takegawara
- Hamawaki Onsen old town
- Yamanote old town
- Kannawa Onsen steam vents etc...

※The course of the Beppu Hatto Walk changes depending on the season.  
For more information on the route, call the number below.

Contact

Beppu Tourism Association  
Co., Ltd.

Phone : 0977-24-2828  
<http://www.beppu-navi.jp/>

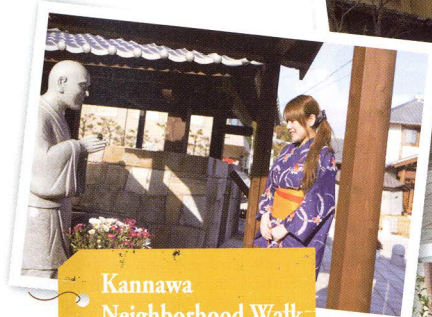
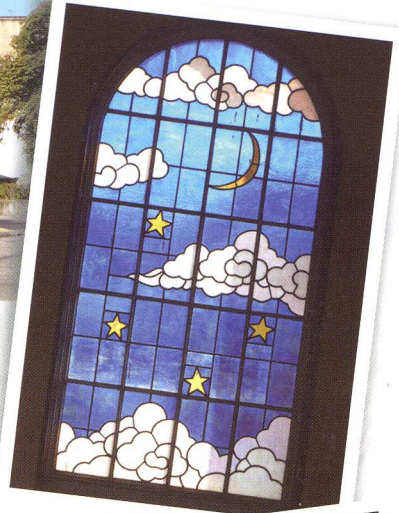


### Chuo Kominkan

Originally built as the Beppu Town Hall in 1928, Chuo Kominkan ("Central Community Center") is valuable example of pre-war modern architecture. It is said to be Modeled after the Stockholm City Hall, its basic design remains unchanged since its completion, including the stained glass and arched beams.

☎0977-22-4118 MAP A-3

Add.6-37 Kamitanoyu-cho, Beppu  
Open 9:00 AM - 10:00 PM



### Kannawa Neighborhood Walk

Kannawa Onsen has attracted hot spring enthusiasts since times of old. Traditional Japanese inns line the streets near the hot spring and you're likely to see locals in their yukata (something like a bathrobe that guests of Japanese inns are given) taking a walk along the stone-paved streets as steam rises from the cracks. Experience the calming atmosphere of traditional Japanese onsen culture that has been kept alive in Kannawa.

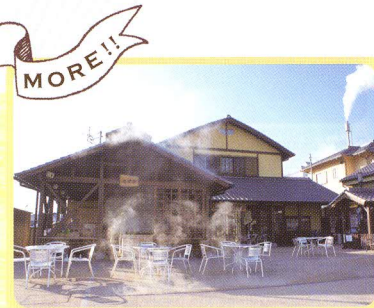


### Hell-Steamd Cooking!? Jigoku Mushi Kobo Kannawa

Jigoku Mushi (literally "hell-steaming") is a unique traditional cooking method found in Kannawa. Food is cooked almost instantly in 100°C (212°F) steam, locking in flavor and nutrients, so it's both healthy and flavorful. There is even a fun workshop where you can select your favorite fish and vegetables and steam them yourself!

☎0977-66-3775 MAP C-2

Add.5-Kumi, Furo moto, Beppu  
Open 9:00 AM - 9:00 PM  
(visitors are not admitted after 8 PM)



*MORE!!*



Have fun at Beppu's many recreational facilities.

# Recreation Course

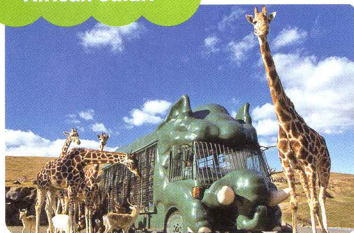
Make your Beppu trip full of fun and adventure

Beppu not only has an abundance of natural landscapes and hot springs, but a variety of recreational facilities including a zoo and an amusement park.

The calm, quiet town of Beppu is also full of excitement and heart-pounding thrills!



## African Safari



The largest safari park in western Japan, you can observe wild animals in a jungle bus or your own car. You can even feed the animals by yourself! There is also a petting zoo and pony riding.

☎0978-48-2331 **MAP D-1**

Add.2-1755-1 Minamihata, Ajimu-machi, Usa  
<http://www.africansafari.co.jp/>

## Beppu Rakutenchi



This vintage amusement park located at the top of the cable car way features an outdoor hot spring with a magnificent view. Have fun with the famous "duck race" and a number of great nostalgic rides. Rakutenchi is a great place to take small children.

☎0977-22-1301 **MAP A-3**

Add.18 Nagarekawa-dori, Beppu  
<http://www.rakutenchi.jp/>

## Takasakiyama Natural Zoo

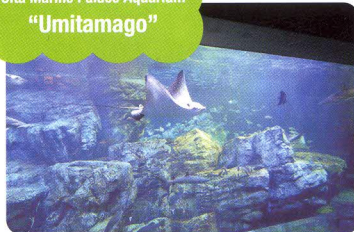


Takasakiyama Natural Zoo houses nearly 1300 Japanese macaque. Unlike conventional zoos, this zoo contains no cages allowing visitors to see the animals up close in their natural habitat. But the highlight is feeding time when all the macaque gather to eat!

☎097-532-5010 **MAP A-4**

Add.3098-1 Kanzaki, Oaza, Oita  
<http://www.takasakiyama.jp/>

## Oita Marine Palace Aquarium "Umitamago"



Overlooking Beppu Bay, Umitamago features a spectacular giant tunnel tank and a touch pool where you can pet various sea creatures. It also has walrus and dolphin shows that are really popular with the kids.

☎097-534-1010 **MAP A-4**

Add.Takasakiyamashita Kaigan, Oita  
<http://www.uitamago.jp/>

## Sanrio Character Park Harmony Land



Harmony Land is an outdoor theme park where you can meet all your favorite Sanrio characters like the world-famous Hello Kitty. With many shows and attractions, it's a great place for children and adults.

☎0977-73-1111 **MAP D-4**

Add.5933 Fujiwara, Oaza, Hiji-machi, Hayami-gun  
<http://www.harmonyland.jp/>

## Suginoi Palace The Aqua Garden

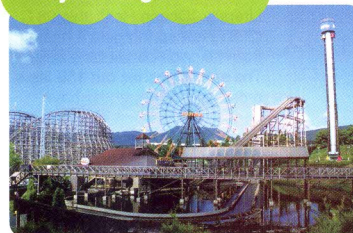


A popular hot springs amusement park where you can gaze out over beautiful Beppu Bay in the day, and enjoy a magical fountain show at night. It features a variety unique attractions including a vast 3200m<sup>2</sup> observation spa and a salt-enriched "float healing bath" where you practically float on top of the water.

☎0977-24-1160 **MAP B-2**

Add.1-kumi, Kankaiji, Beppu  
<http://www.suginoi-hotel.com/facilities/theaquagarden.html>

## Kijima Kogen Park

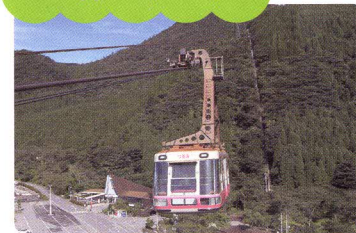


Kijima Kogen Park is an amusement park nestled inside a vast forest. With a variety rides from fast and furious roller coasters like the wooden Jupiter to cute kiddie rides, there are plenty of things for the whole family to enjoy.

☎0977-22-1165 **MAP A-1**

Add.123-1 Kijima Kogen, Beppu  
[www.kijimakogen-park.jp/](http://www.kijimakogen-park.jp/)

## Beppu Ropeway

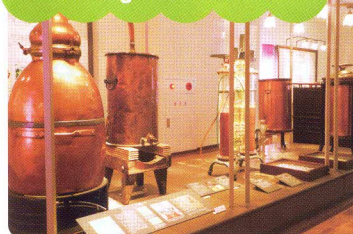


The Kintetsu Beppu ropeway departs from Kogen Station (503 m) and takes you to the top of the 1300 meter-high Mt. Tsurumi. It takes about 10 minutes and along the way you'll have a panoramic view of Beppu Bay that can be enjoyed all year round.

☎0977-22-2278 **MAP A-1**

Add.10-7 Kambara Aza Minamitateishi Oaza Beppu  
[www.beppu-ropeway.co.jp/](http://www.beppu-ropeway.co.jp/)

## Oita Fragrance Museum



A unique museum that houses exhibits on the culture and history of fragrances and perfume bottles, it boasts a collection of over 3700 perfumes. The museum also features a Fragrance Workshop where you can create your own unique perfumes.

☎0977-27-7272 **MAP C-3**

Add.48-1 Kitaishigaki, Beppu  
<http://oita-kaori.jp/>



Experience the mysteries of the earth.

# Jigoku Meguri Course

## Experience Onsen Entertainment!



Jigoku Meguri is the quintessential Beppu trip.

Visit the boiling jigoku (literally "hell") springs that gush forth steam and boiling mud and water for a hot spring experience that uses all five senses.

Tour all eight jigoku hot springs and witness the mysterious power of nature.



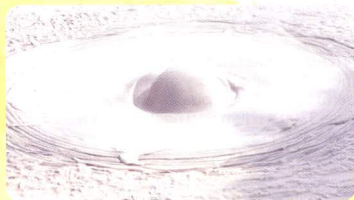
### National Site of Scenic Beauty Umi Jigoku

Literally "Ocean Hell", this 98°C (208°F) hot spring gets its name from its cool, cobalt blue color. The spring gushes out 150 liters a day and is thought to have been created when Mt. Tsurumi erupted 1200 years ago. Water lilies are cultivated here using the steam of the spring as well. You can see them in bloom from the beginning of May to the end of November.

☎0977-66-0121 MAP C-2  
Add.559-1 Kannawa, Beppu  
Open 8:00AM-5:00PM

### Oniishi Bozu Jigoku

The name (meaning "Shaven Monk's Head") comes from the grey mud that bubbles up from the springs. The round bubbles are said to look like the shaven head of monk.



☎0977-27-6655 MAP C-2  
Add.559-1 Kannawa, Beppu Open 8:00AM-5:00PM

### Yama Jigoku

The zoo uses the steam from this hot spring to heat a bath for the animals. Come see the animals which are taking a warm bath.



☎0977-66-0647 MAP C-2  
Add.926 Kannawa, Beppu Open 8:00AM-5:00PM

### National Site of Scenic Beauty Chi-no-ike Jigoku

Chi-no-ike ("blood pond") is the oldest jigoku spring in Japan. Its name comes from the boiling blood-red clay--even the steam rising from the spring is red. Visitors can purchase Chi-no-ike ointment made from the magnesium oxide-rich mud, which is said to be good for skin disease. It has been their best selling item since before WWII.

☎0977-66-1191 MAP D-3  
Add.778 Noda, Beppu  
Open 8:00AM-5:00PM



### Kamado Jigoku

Kamado ("furnace") Jigoku consists of several jigoku springs that span several blocks. Enjoy a wide variety of jigoku hot springs in a theme park-like atmosphere.



☎0977-67-3171 MAP C-2  
Add.721 Kannawa, Beppu Open 8:00AM-5:00PM

### Oniyama Jigoku

Oniyama Jigoku is the first place in Japan to use the heat produced by natural hot springs to raise alligators, which has earned it the nickname "Alligator Jigoku". Today it houses over 100 alligators from all over the world.



☎0977-67-1500 MAP C-2  
Add.625 Kannawa, Beppu Open 8:00AM-5:00PM

### National Site of Scenic Beauty Shiraike Jigoku

At Shiraike Jigoku, the transparent spring water turns into bluish white as time passes. The pond smells of sulphur and is surrounded by steam.



☎0977-66-0530 MAP C-2  
Add.283 Kannawa, Beppu Open 8:00AM-5:00PM

### National Site of Scenic Beauty Tatsumaki Jigoku

Tatsumaki Jigoku ("Tornado Hell") owes its name to the tornado-like geyser that gushes out huge amounts of boiling water at a regular interval for nearly 5 minutes at a time.



☎0977-66-1854 MAP D-3  
Add.782 Noda, Beppu Open 8:00AM-5:00PM

MORE!!



## The Father of Beppu Tourism Kumahachi Aburaya MAP B-4

Kumahachi Aburaya's commitment to hospitality and unique ideas built the foundation for Beppu tourism. Warmly welcoming travelers from the Taisho through Showa period (1912-1988), he was the first person in Japan to begin using female bus tour conductor and was an active promoter of the now ubiquitous onsen mark. He was instrumental in developing the Beppu tourist industry under his catchphrase, "The best of Japan: Mt. Fuji, Seto Inland Sea and Beppu Hot Springs" In honor of his accomplishments a bronze statue was erected at Beppu Station to welcome travelers into the city.



# Local Beppu Cuisine and Crafts

## Cuisine

### Beppu Toriten

Local cuisine originating from Beppu, toriten is chicken fried in tempura batter. It is usually served in a soy and vinegar sauce, with karashi (Japanese mustard) on the side for dipping. You can find Toriten at Japanese restaurants, Chinese restaurants or at cafes.



### Beppu Reimen

The roots of this local cuisine can be found in Manchuria. The dish consists of chewy ramen noodles in Japanese seasoned-broth and served cold. You can find it anywhere in Beppu.



### Beppu Pudding

The custard pudding is cooked with steam from a hot spring. You can enjoy it in Myoban and Kannawa areas.



### Jigoku Mushi

Jigoku Mushi (literally "hell-steaming") is a traditional Kannawa cooking method in which fish, meat, eggs and vegetables are steamed in mineral-rich hot spring steam to delicious perfection. There is even a place in Kannawa where you can try Jigoku Mushi cooking by yourself.

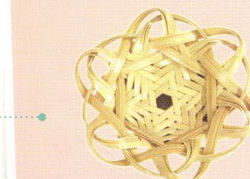


Experiencing regional tastes that are rooted in the local culture is an essential part of traveling. And souvenirs that tell the local story are a great way to remember your trip by.

## Crafts

### Bamboo crafts

Beppu is known for its excellent bamboo craftsmanship. Traditional household goods such as flower vases, baskets, and chopsticks make for excellent souvenirs.



### Boxwood crafts

Traditional boxwood crafts have been well-loved as souvenirs and gifts for generations. Items like brushes, combs, figurines and rings are especially popular with women.



### Yunohana

Yunohana are crystallized minerals known for their outstanding cleansing and antibacterial properties. They are often used to make bath salt but natural cosmetics such as soaps and lotions are also popular.



### Zabonzuke

A traditional local confectionery made from marinating the skin of pomelo fruit in honey and then drying it. It goes great with green tea.





# Beppu Area Map

